

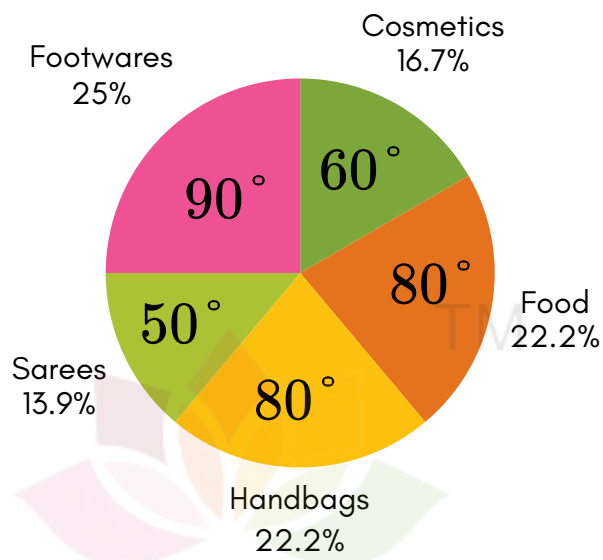


# DATA HANDLING

## Worksheet 1



1. Riya spends ₹ 10800 in a month. The given pie chart shows the amount of money spend by Riya on various items in a month. Study the pie chart carefully and answer the following questions.



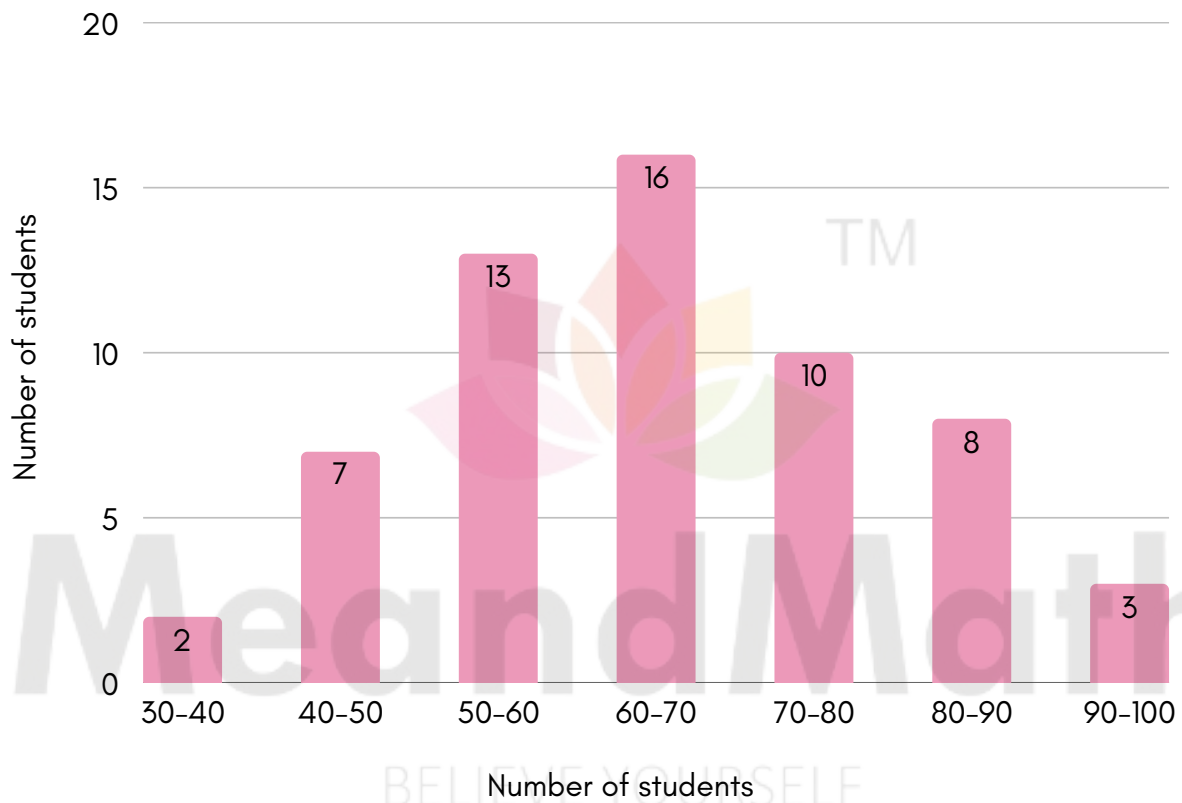
- (i) What fraction of money does Riya spends on sarees?
- (ii) How much less does she spend on handbags than on footwears?
- (iii) What percentage of money is spent on food?

	(i)	(ii)	(iii)
A.	$\frac{5}{39}$	₹ 300	$21\frac{1}{9}\%$
B.	$\frac{1}{36}$	₹ 400	$22\frac{1}{9}\%$
C.	$\frac{5}{36}$	₹ 300	$22\frac{1}{9}\%$
D.	$\frac{5}{36}$	₹ 400	22%



**scroll down for Answer key**

**Direction (2-3) :** The histogram representing the marks obtained by 60 students in a Mathematics examination is given below. Study the histogram carefully and answer the following questions.



2. If the minimum passing marks is 40, then how many students failed?

- A. 1                      B. 13                      C. 2                      D. 7

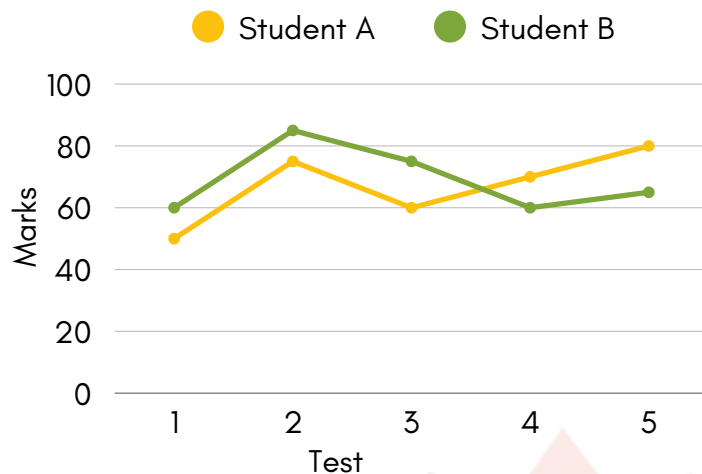
3. How many students are awarded merit, if the minimum marks required for it is 70?

- A. 10                      B. 22                      C. 12                      D. 8



**scroll down for Answer key**

**Direction (4-5) :** The line graph shows the performance of two students during a year. Read the graph and answer the following questions.



4. In which of the following tests student B showed his worst performance?

- A. Test 5                      B. Test 3                      C. Test 2                      D. Test 1

5. In all, whose performance is better during the year?

- A. Student A                      B. Both showed same performance  
C. Student B                      D. Can't be determined

6. If seven slips of paper are labelled as 1, 2, 3, 4, 6, 7, 8, and one slip is drawn out of it, then what is the probability that it is

(i) a 7?

(ii) greater than 4?

(iii) an odd number?

	(i)	(ii)	(iii)
A.	$\frac{1}{7}$	$\frac{3}{7}$	$\frac{4}{7}$
B.	$\frac{1}{7}$	$\frac{3}{7}$	$\frac{3}{7}$
C.	$\frac{1}{7}$	$\frac{2}{7}$	$\frac{5}{7}$
D.	$\frac{1}{7}$	$\frac{5}{7}$	$\frac{2}{7}$



**scroll down for Answer key**

7. Manya selected a card from a deck of 52 playing cards. Find the probability that the selected card is a black king.

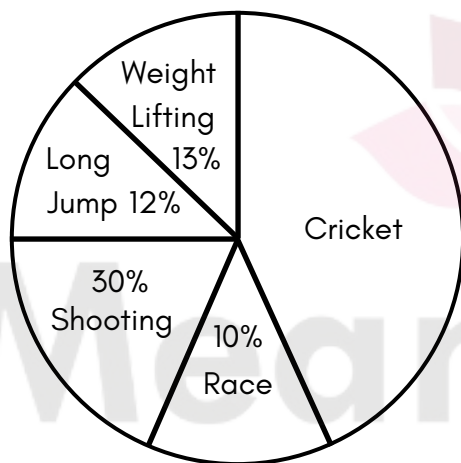
A.  $\frac{2}{13}$

B.  $\frac{1}{24}$

C.  $\frac{1}{13}$

D.  $\frac{1}{26}$

**Direction (8 - 9) :** The given pie charts shows the number of sportsmen who participated in different sports. If the total number of sportsmen who participated are 800, then answer the following questions.



8. What fraction of the sportsmen participated in shooting to the total number of sportsmen participated?

A.  $\frac{2}{10}$

B.  $\frac{3}{10}$

C.  $\frac{8}{15}$

D.  $\frac{7}{10}$

9. How many more sportsmen participated in cricket than the sportsmen who participated in weight lifting and long jump together?

A. 120

B. 90

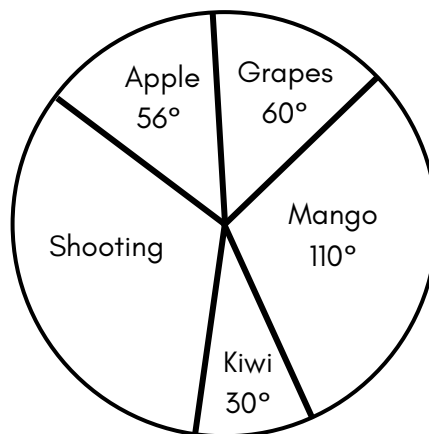
C. 200

D. 80

10. The given pie chart shows the different types of fruits in a store. The total number of fruits in the store is 1080.



**scroll down for Answer key**



If a fruit is selected at random, then

(a) Find the probability that the selected fruit is an Apricot.

(b) Find the probability that the selected fruit is a Kiwi.

- |    | (a)             | (b)             |
|----|-----------------|-----------------|
| A. | $\frac{19}{60}$ | $\frac{29}{60}$ |
| B. | $\frac{17}{45}$ | $\frac{7}{22}$  |
| C. | $\frac{13}{45}$ | $\frac{1}{12}$  |
| D. | $\frac{23}{45}$ | $\frac{17}{40}$ |
- 



**scroll down for Answer key**



**MeandMath**  
BELIEVE YOURSELF

## **BOOST YOUR MATH PERFORMANCE WITH MeandMath**



Our Premium Batches are 1:1, 1:2, 1:3 and 1:6 & another batch is 1: many batches.



Clear Doubts, Master Concepts, Excel with Confidence.



Learn on Your Schedule with Our Class Recordings.



Stay Ahead, Stay Sharp: Conquer Daily Homework Hassle-Free



Level Up Weekly: Ace Assessments with Confidence and Ease

### **Join Our Live Classes**

**Preparing for the  
Math Olympiad?**

**Book Now** ➤

### **Register to MnM Olympiad**

**Want to test your  
International Math  
Rank?**

**Register Here** ➤

Visit [meandmath.com](https://meandmath.com) to learn more about us.



# A Roadmap to Brilliance

Our curriculum paves the way.

○ **Core**      ○ **Advanced**      ○ **Scholar**

Visit [meandmath.com](https://meandmath.com) for further details on Curriculum.

*“There are many  
paths to success in  
Math. We help all  
students discover  
theirs.”*

**Are you stuck, not sure how  
to solve math problem?**

**Want to Super Charge your  
Math skills with our World Class  
practice content!**

**Join our Homework  
Help Group!**

[Join Now](#)



**Subscribe today to  
get a resource to  
unlock the World of  
Wisdom!**

[Subscribe Here](#)



Visit [meandmath.com](https://meandmath.com) to learn more about us.



# Answer Key

1. B
2. C
3. D
4. A
5. A
6. B
7. C
8. C
9. A
10. A



TM

MeandMath

BELIEVE YOURSELF